

## User Guide

This brief user guide will get you up and running in no time. We've only included the most essential functions of this operating system, based on Android™, so if you'd like additional guidance or want to dig into the technical details, please visit [fairphone.com/support](http://fairphone.com/support), watch our [tutorials on fairphone.com/tutorials](http://fairphone.com/tutorials) or download an Android Quick Start Guide from the [Google Play Store](http://Google Play Store).

## Contents

Getting Started	2
Touch Controls	5
Buttons, Icons, Panels and Menus	6
Buttons	6
Panels	6
Status Bar Icons	8
Pull-down Menu	9
Edge Swipe Menu	10
Basic Tasks	11
Phone Calls	11
Messages (SMS)	11
Camera	12
Internet	12
Contacts	13
Apps and Widgets	14
Accounts	16
Change the Language	17
Dual SIM functionality	17
Updates and DIY Repairs	18
Software Updates	18
Replace your Screen	18
Replace your Battery	20
Help Protect the Environment!	21
Charging	21
Fairphone Recycling Program	21
We're here to help	22

## Getting Started

### 1. Remove the battery

- Remove the back cover (image 1 p. 3)
- Lift out the battery starting from the bottom (image 2 p. 3).

### 2. Insert one or two SIM cards

You can use Micro SIM cards in your Fairphone.

- 1 Insert your Micro SIM card into slot 1.

- 2 Optional: Insert an additional Micro SIM card into slot 2.

- ⚠ Please be careful not to damage the SIM connector when removing the SIM card.

To set your dual SIM preferences go to All Apps (☰) tap on Settings (⚙) and select SIM Cards.

### 3. Insert a microSD Card (optional)

You can expand your storage with a microSD memory card (see p. 3).

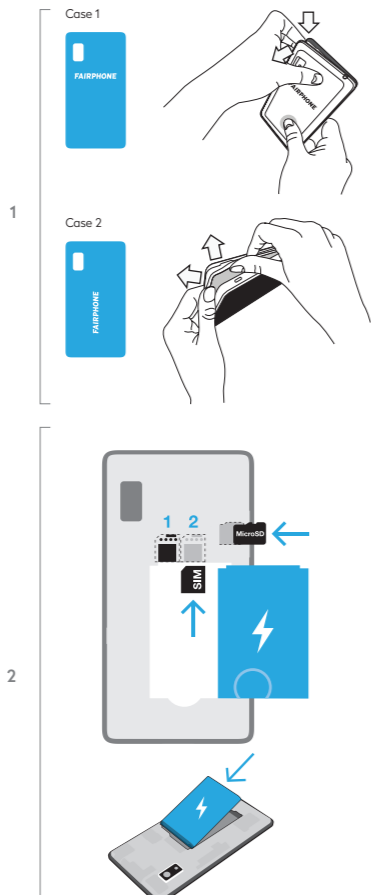
- ⚠ Turn your phone off before inserting or removing a microSD card.

### 4. Insert your battery

Insert the battery from the top and then press it into place from the bottom.

### 5. Put the back cover on

Because the back cover fits snugly around the phone, you may find it a bit tricky to put on the first time. Start by sliding the top of the phone into the cover and slowly press it into the back cover, ensuring that the rubberized lip completely covers the edges of the screen.



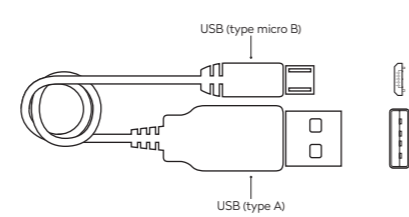
### 6. Turn on your Fairphone

Push and hold the on/off button on the right-hand side of your phone for at least three seconds.

### 7. Charge your phone

A power adapter and USB cable are not included. To charge your Fairphone, use a standard USB-cable with a micro B connector (IEC/EN 62684). Connect the USB cable to the USB port located at the bottom of the phone and then plug it into your computer or a power outlet (using an adapter with a USB port). In addition to charging, you can also use the USB cable to transfer data.

- ⚠ Please make sure that the nominal output of the charger/USB port is 5 Volts and 1 Ampere. Make sure you plug the USB cable in the right way.

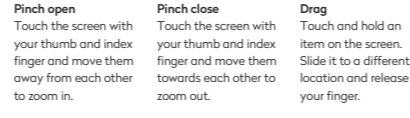
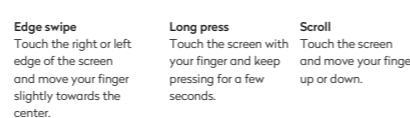
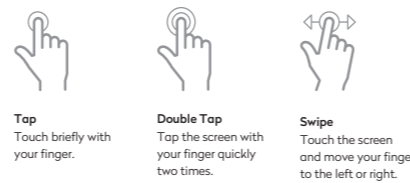


### 8. Follow the instructions on the screen

Once your phone is on, the set up wizard will guide you through the final set up steps. During this process you can also set up your Google™ account. To set up another account, skip this tutorial, go to Settings (⚙) and tap on Accounts.

## Touch Controls

You can control your Fairphone using basic touch gestures:



## Buttons, Icons, Panels and Menus

### Buttons

#### Physical buttons

The Fairphone has only three physical buttons: the volume button, on/off button and camera/shutter button.

#### Navigation buttons

When your Fairphone is turned on, three navigation buttons appear at the bottom of the screen:

- ◀ **Back:** Go one step back
- 🏠 **Home:** Go to the Home panel
- ☑ **Open Apps:** View all open apps

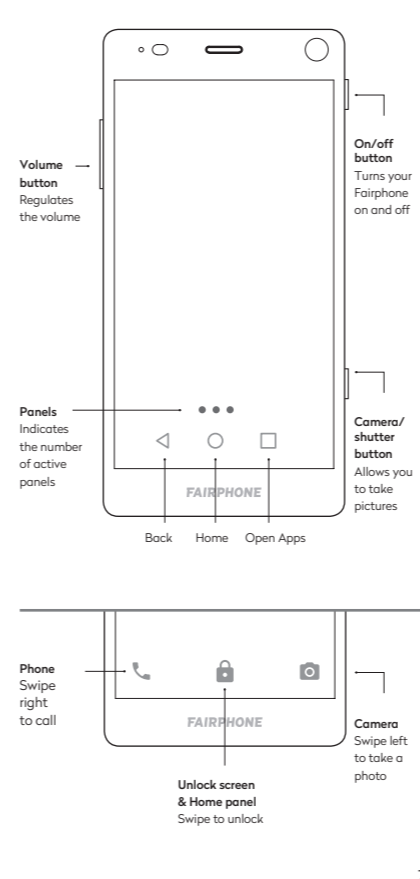
### Panels

Fairphone's operating system works with panels. The dots at the bottom of the screen show you how many panels are active. Swipe left or right to navigate between panels.

#### The three default panels are:

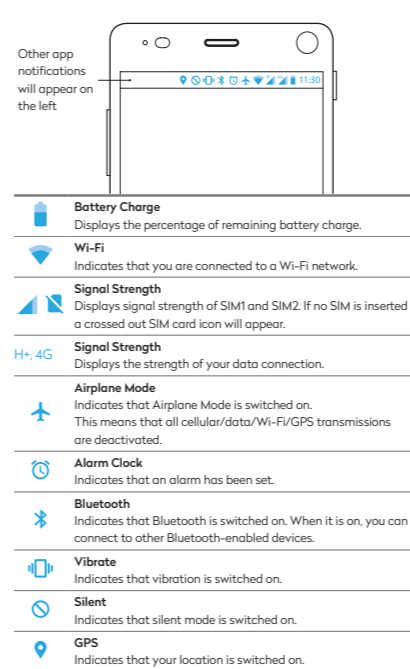
- Home panel:** Displays the Google search bar plus a few additional Google services.
- Recent Contacts:** Displays your most recent contacts, four most frequently used contacts, plus access to your complete contact list.
- Recent Apps:** Displays five recently used and five most used apps, plus access to All Apps (☰).

**Tip!** Take me home: If you get lost while navigating your new Fairphone, there's no need to panic. Just tap the Home button (🏠) to go back to the Home panel.



### Status Bar Icons

The Status Bar is located at the very top of your screen. The displayed icons give you information about the status of your Fairphone's various functions.



### Pull-down Menu

The Pull-down Menu gives you quick access to the Notification Bar and the Settings Shortcuts.

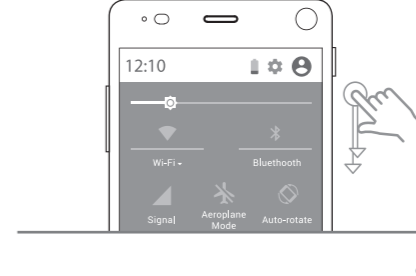
#### Notification Bar

The Notification Bar gives you an overview of recent calls, events, messages, app updates and more. You can access the Notification Bar by swiping your finger down from the top of the screen.



#### Settings Shortcuts

The Settings Shortcuts provides quick access to your Fairphone's basic settings. Swipe your finger down from the top of the screen twice to open the Settings Shortcuts.

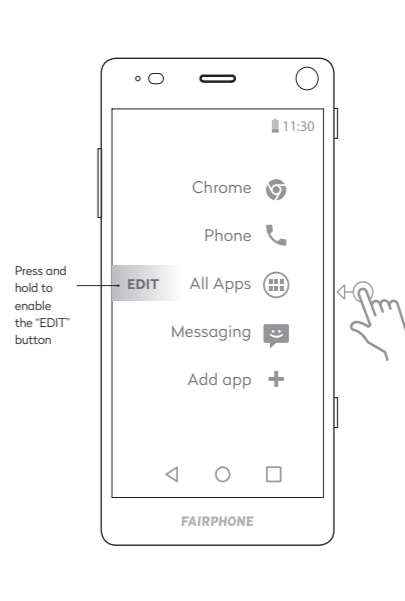


### Edge Swipe Menu

From your Home panel, edge swipe from the right or left side of your screen to access the Edge Swipe Menu. This menu gives you quick access to All Apps (☰) and four of your favorite apps. Three quick access icons are preinstalled: Browser, Phone and Message.

#### To customize the pre-installed menu:

- Open the Edge Swipe Menu.
- Keep your finger pressed down and drag to Edit
- Drag apps from Edit Favorites to the Edge Swipe Menu.



## Basic Tasks

### Phone Calls

#### Answer an incoming phone call

- Swipe the phone icon to the right to the blue icon.
- To decline a call, swipe the phone icon to the left to the red icon.

#### Call a new phone number

From the Home panel:

- Open the Edge Swipe Menu and tap Phone.
- Tap the numbers icon (1234) at the bottom of the screen.
- Enter the number you want to call.
- Tap the phone icon (📞) to start making a call.

#### Call one of your contacts

From the Home panel:

- Open the Edge Swipe Menu and tap Phone.
- Tap Contacts in the menu at the top right.
- Tap a contact from the list.
- Tap the phone icon (📞) to start making a call.

### Messages (SMS)

#### Send an SMS

From the Home panel:

- Open the Edge Swipe Menu and tap All Apps (☰).
- Tap the Messaging icon (✉).
- Tap the new message icon (✉), at the bottom left.
- Select the recipient(s): Enter the name(s) or phone number(s) in the top field.
- Type your message in the field that says: "Type message".
- Tap the send message icon (➤).

To learn more about using the Dual SIM functionality for Messages, go to page 17.

our recycling program, please take it to a local recycling point. Learn more at: [fairphone.com/recycling](http://fairphone.com/recycling)

Make sure to delete your personal data before donating or recycling your phone. Follow these steps:

- Go to Settings (⚙).
- Tap Backup & reset.
- Tap Factory data reset.
- Tap Reset phone.

## We're here to help

For additional questions and customer support, visit our forum or submit a request at [fairphone.com/support](http://fairphone.com/support). You can also call us at +31 (0)20 788 4401.

**Fairphone BV**  
Jollemanhof 17, 1019 GW  
Amsterdam, The Netherlands

Fairphone BV is registered in the Chamber of Commerce of The Netherlands.  
Registration number: 55901964  
VAT number: NL851904270B01.

We want to you to keep your Fairphone 2 working as long as possible with spare parts and repairs. But when it finally reaches the end of its life, you can send it in to our recycling program for free: [www.fairphone.com/recycling](http://www.fairphone.com/recycling)

Old phones contain metals and other materials that can be recycled, helping to save valuable resources and protect the environment.

Never dispose of old phones or batteries in the regular trash, as they contain toxic substances. If you do not want to send in your old phone using

3FP21GUID01-03A

## Updates and DIY Repairs

### Software Updates

When updates are available, they will appear in the Notification Bar under the Pull-down Menu.

#### You can also:

- Open All Apps (☰) using the Edge Swipe Menu.
- Tap the Updater app (🔄).
- Tap the Install update icon.

**Note:** Downloading and installing software updates can take several minutes. You can only do this over a Wi-Fi connection. Please ensure your phone is fully charged or connected while updating.

If you have any problems installing an update, follow the instructions on the support section of our website: [fairphone.com/updates](http://fairphone.com/updates)

### Replace your Screen

The Fairphone 2 is designed to help extend the phone's usable life. The design should make do-it-yourself repairs more accessible, but you will still need to be careful. When opening the device make sure you use a flat surface with enough space to lay the device on and that your hands and surroundings are free from dirt and dust.

These are just the basic instructions. Before you make a repair consult our video tutorials online at [fairphone.com/support](http://fairphone.com/support) or call us! We are happy to help.

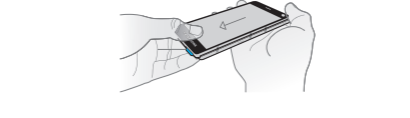
Within each profile you can choose specific apps, create specific settings and determine which SIM card you want to use by default. To create a new profile go to the Settings menu and tap on Users.

The screen is one of the most commonly damaged components on a smartphone. If you crack your screen, you can order a replacement in Fairphone's online shop and repair it yourself.

- Turn off your Fairphone using the on/off button.
- Remove the back cover (image 1 p. 3).
- Remove the battery (image 2 p. 3).
- Slide the blue clips at the bottom of the phone to the middle (towards each other).



- With your thumbs on the screen, press gently and slide the screen down to detach it from the body of the phone. You can now release the screen separating it from the body.



- To insert the new screen, mind the 7 white anchor points under the screen. With the help of the side marks you can position the anchor points in place before you slide the screen upwards gently but firmly. You will hear a 'click' when it is in place.

